



A Purpose-Led Science Based Company  
Offer Multi-Disciplinary Service From  
**Concept To Commissioning**



# About Us:

## Where Cleanroom Standards Meet Excellence.

BKC MEDICAL INSTRUMENT INTELLIGENCE PVT LTD was established in the year 2024 in the Ahmedabad region. With many years of experience, the company has established a strong and powerful presence in the region of earning recognition for its quality workmanship, flexibility, & timely completion of projects to the highest standards.

We are experts in **CLEANROOMS AND REGULATED ENVIRONMENTS**. We have developed viable infrastructure for biotech facilities, hospitals, and mostly pharmaceutical facilities in more than 8 NATIONS worldwide throughout the years.

We take proud to share here with you, 'BKC MEDICAL INSTRUMENT INTELLIGENCE PVT LTD' was awarded, an ISO 9001:2015 certification for our continues process of Quality Management System and demonstration of our ability to consistently products, services that meet Customer's requirement and always aims to enhance customer satisfaction through effective application of the system, including processes for continual improvement and assurance of conformity to customer.

We understand that time and cost are crucial to all our customers and as such, we strive to deliver our projects in time and at the most cost-effective price point. We always go above and beyond our client's expectations.

# Vision:

Be one of the most reputable companies in the world for project engineering by adding value for our partners, employees, and clients.

Provide most modern and economical design, fulfilling the functional requirements to the most satisfaction of the valued customers with product quality assurance, incorporating latest technologies advancement.



# Mission:

By comprehending the unique requirements of our clients, we can develop and deliver projects that are viable, sustainable, and effective. Ensuring a smooth project delivery process and learning about new, environmentally friendly ways to solve issues.

Providing low cost with high productivity, environment balancing, energy efficiency and regulatory compliances products to customers by working with close co-ordination with client, justifying and validating the needs, to understand their desire and limitations.



# Why BKC MII PVT LTD?

You receive more than just a single product or a tightly integrated set of Turnkey Solutions when you pick BKC MII PVT LTD. What you get is our access to some of the top engineering minds, our commitment to finishing what we start, and our transparent value systems. This, in our opinion, is what we have to give the industry best.



## Ease of doing business

Majority Critical products manufactured in house Works with high quality vendors and suppliers More than 100 Projects delivered.



## Strong Financial Capabilities

Comfortably executed high value projects. Financially stable company.



## Ease of use post Installation

All our installations have been thoroughly validated. Additional partitions provided for future replacement in case of accidental damage.



## Reasonably affordable

Pricing aligned with market pricing and providing the best quality, ensuring best value.



## Single Point Contact for Entire Turnkey Projects

Provides benefit to customers due to integration capabilities and shrinking overall project timeline by 25% due to multiple overlapping activities.

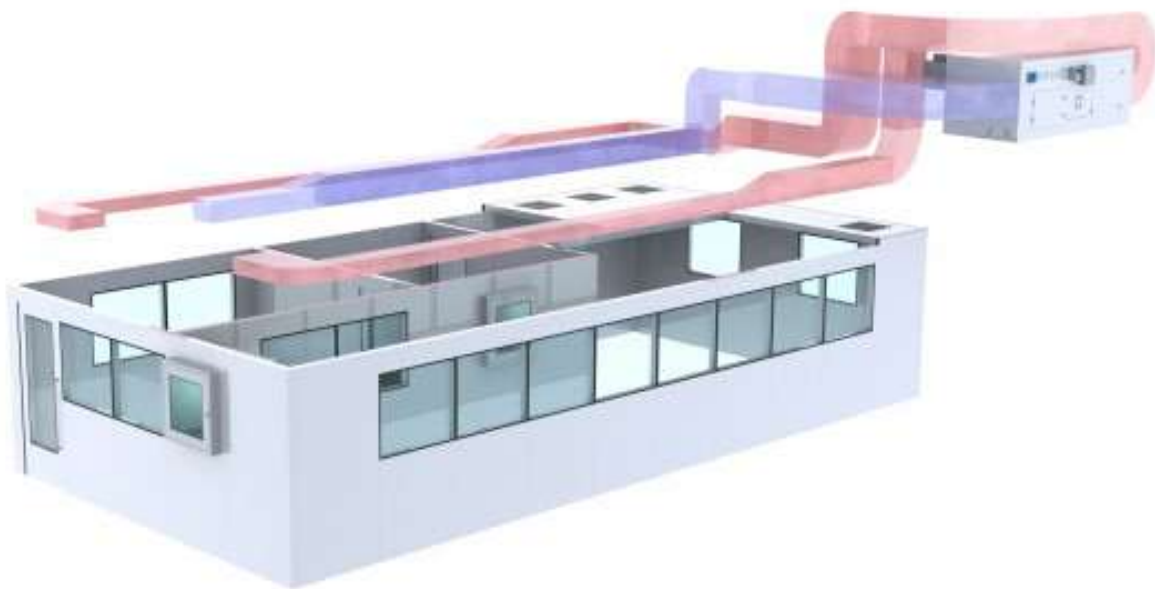


## Highly Skilled Team

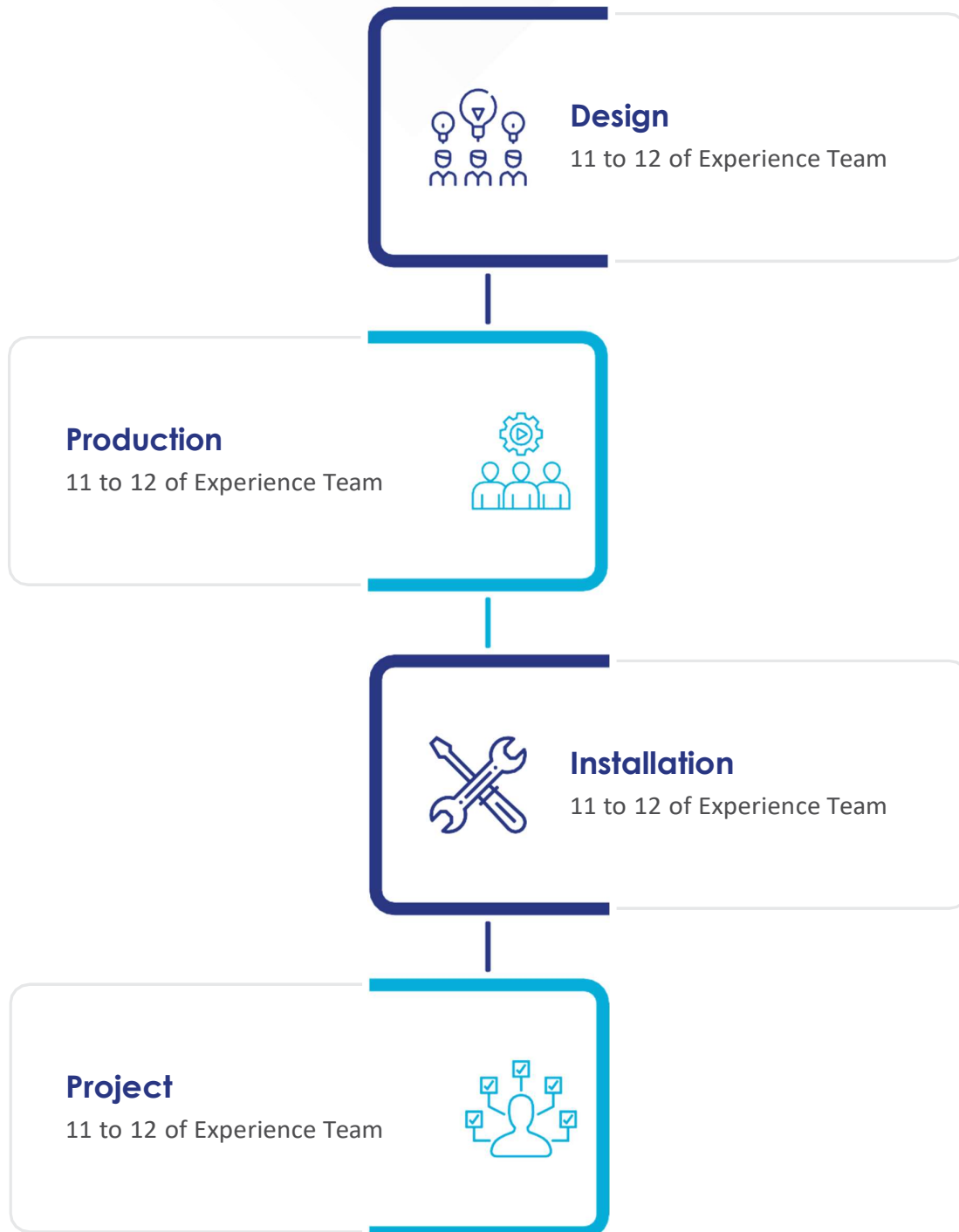
At HVAX we take our investments on human capital seriously. It is for this reason that we hire and deploy the best in the business ensuring that our project execution bears our brand name so as to match the manufacturing quality.

# Engineering Design Covers Below Aspects:

- SYSTEM ZONING
- DUCTING
- AIR HANDLING UNITS
- MAGNEHELIC GAUGES
- SPLIT/CASSTAE UNITS
- COOLING TOWER, COOLING TOWER PUMP
- PRESSURE ZONING
- AHU G.A
- ELECTRICAL PANEL
- PLANT ROOM
- SCHEMATIC LAYOUT
- AREA CLASSIFIACION
- CHILLED & HOT WATER PIPING
- DOOR DIRECTION
- CHILLER PUMP
- HEPA, RISER, GRILL DIFFUSER



# Our Strength:



# Our Focus Domains:



Clean Room Panels



HVAC Systems



Electrical HT/LT



Clean Room Equipment



Containment  
Technology



Pre-Engineered  
Buildings



Laboratories &  
Furniture



Engineering  
Consultancy



Validation &  
Qualification



Technology  
Transfer



Containment  
Consultancy



Project Feasibility



Building Management  
Systems



Utility Generation  
& Distribution

# Customization Modular Clean Room Wall panel

The clean room range is led by the high specification FM approved aluminum honeycomb core panel. The aluminum honeycomb core provides low weight, high strength, mechanical stability, excellent flatness and importantly, for clean room environments, it is non shedding.

Sandwich type PUF insulated wall panel made different type material like **PPGI**, **PCGI** and **HPL** and different type thicknesses.

**PPGI** - Preprinted galvanize sheet both side PUF insulated With Aluminum section frame.

**PCGI** - Antibacterial powder coated both side PUF insulated with Aluminum frame.

**HPL** - High pressure Luminare sheet both side PUF insulated with Aluminum frame.

**SS 304** - **SS 304** sheet both side puff insulated with Aluminum frame I.

Glass OT - One side Toughen Glass and Outer side Preprinted GI sheet with Aluminum frame.



# Cleanroom Doors

To be configured as single/double swing-out or as horizontal sliding either manual, Automatic or semiautomatic. Door panels are assembled with the same panels of the wall system. Swing out cleanroom doors are designed to fit flush with both sides of the wall panel system and are supplied in several dimensions.

The external frames are manufactured with rounded anodized or epoxy coated aluminum profiles with air tight dual gaskets. All fasteners for the hinges and latches can be recessed into the door frame. Standard hinges allow doors to swing 180° degrees from full open to full closed position. Clean room doors are also available with interfacing profile for a flush and easy installation on existing walls.



# Core Manufacturing:

## HVAC

DUCTS, HEPA boxes, and air handling units Because the **HVAC** system in a building consumes more than **50%** of the input energy used in pharmaceutical manufacture, you need to hire an expert.



## Electric Panels

End-to-End Electrical Solutions with Panels Made In-House, From Transformers, Generators to Smallest Voltages

# Pharmaceutical:

- Chiller plant
- HVAC system
- Clean room project
- Electric work
- Epoxy flooring
- Fire Door



# Food Industry:

- Chiller plant
- HVAC system
- Clean room project
- Electric work
- Epoxy flooring
- Fire Door

# Modular Operation Theater:

- Hepa filter
- Laminar
- Air handling Machine
- Ducting work
- Clean room PUF Panel
- Clean Room Door
- Vinyl Flooring



## Valued Clients:






---

## Contact us:

 +91 98252 54484

 [info.bkcmii@gmail.com](mailto:info.bkcmii@gmail.com)

 Shed No. 51, Safal Industrial Park, Bakrol Dhamatvan Road,  
Dhamatvan, Ahmedabad, Gujarat – 382435, India